

RESOLUTION NO. ~~03~~-102

RESOLUTION CREATING RURAL SPECIAL IMPROVEMENT MAINTENANCE
DISTRICT TO BE KNOWN AS R.S.I.D. #707M
Mortensen SUBDIVISION

WHEREAS, the Board of County Commissioners of Yellowstone County, Montana, met in regular session and executed a Resolution of Intent to Create a Rural Special Improvement Maintenance District #707M for Mortensen Subdivision, as described in Exhibit A and more particularly shown in Exhibit B (map) and,

WHEREAS, the Clerk and Recorder published the Notice of the passage of Resolution of Intent to Create the District in the Billings Gazette on August 1 and 8, 2003, and mailed a copy of the Notice to every person, firm or corporation owning property in the District; and,

WHEREAS, the Board of County Commissioners finds, determines and declares that:

1. That the public interest or convenience requires the creation of a Rural Special Improvement Maintenance District as hereinafter described;
2. That the costs of providing maintenance shall be borne by owners of the property included within the boundaries of the Rural Special Improvement Maintenance District with all existing and future lots being assessed an equal amount on a per lot basis;
3. That the purpose of forming the District is to provide the maintenance, preservation, and repair of the streets located within the boundaries of this District;
4. That the Commissioners have been presented with a valid Petition to create the proposed District;

NOW, THEREFORE, BE IT RESOLVED by the Board of County Commissioners of Yellowstone County as follows:

1. The Commissioners have acquired jurisdiction to create a Rural Special Maintenance District No. 707M to provide for the annual maintenance, grading, operation and preservation of the streets. The maintenance costs are more particularly described in Exhibit C. The estimated costs shown do not preclude other eligible street maintenance expenditures.
2. All of the costs of the District shall be assessed equally on a per lot basis for all existing and future lots. (See Exhibit D.) The boundaries of this District are shown on the map attached as Exhibit B and described in Exhibit A.
3. The number of the Rural Special Maintenance District thereof shall be **No. 707M.**

4. All lots accessing their property from the streets will benefit from proposed R.S.I.D. and shall be assessed for road maintenance. All lots will be assessed an equal amount based upon the total cost of the maintenance.

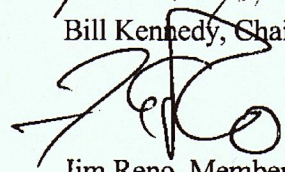
5. The Commissioners desire that an Ad Hoc Committee be appointed to make recommendations to the Commissioners with regard to the need for assessments to be made for the maintenance and the amount of the assessments, and how the assessments should be spent. The Commissioners ask that the Petitioners submit a list of some individuals who are willing to serve on the Ad Hoc Committee.

PASSED AND ADOPTED by the Board of County Commissioners of Yellowstone County, Montana, this 12th day of August, 2003.

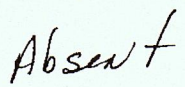
Board of County Commissioners
Yellowstone County, Montana

(SEAL)


Bill Kennedy, Chair


Jim Reno, Member

ATTEST:


John Ostlund, Member


Tony Nave
Clerk and Recorder

Exhibit A

PETITION TO ESTABLISH A RURAL SPECIAL IMPROVEMENT DISTRICT (RSID)

SECTION B
LEGAL DESCRIPTIONS & OWNERSHIP REPORTS (ATTACHED)

MORTENSEN SUBDIVISION

Lot 1 Block 1

George E. & Theora J. Mumm
P.O. Box 903
Lakeside, MT 59922

Dan Mortensen - Contract for Deed Buyer
945 Noblewood Drive
Billings, MT 59101

PLAT OF WORK **Exhibit B** SUBDIVISION

LOCATED IN THE SW1/4 SE1/4, SECTION 20, T.1N., R.27E., P.M.M.,
YELLOWSTONE COUNTY, MONTANA

FOR: DAN MORTENSEN
BILLINGS, MT.

BY: ATLAS ENGINEERS INC
BILLINGS, MT.

DATE: MAY, 2003

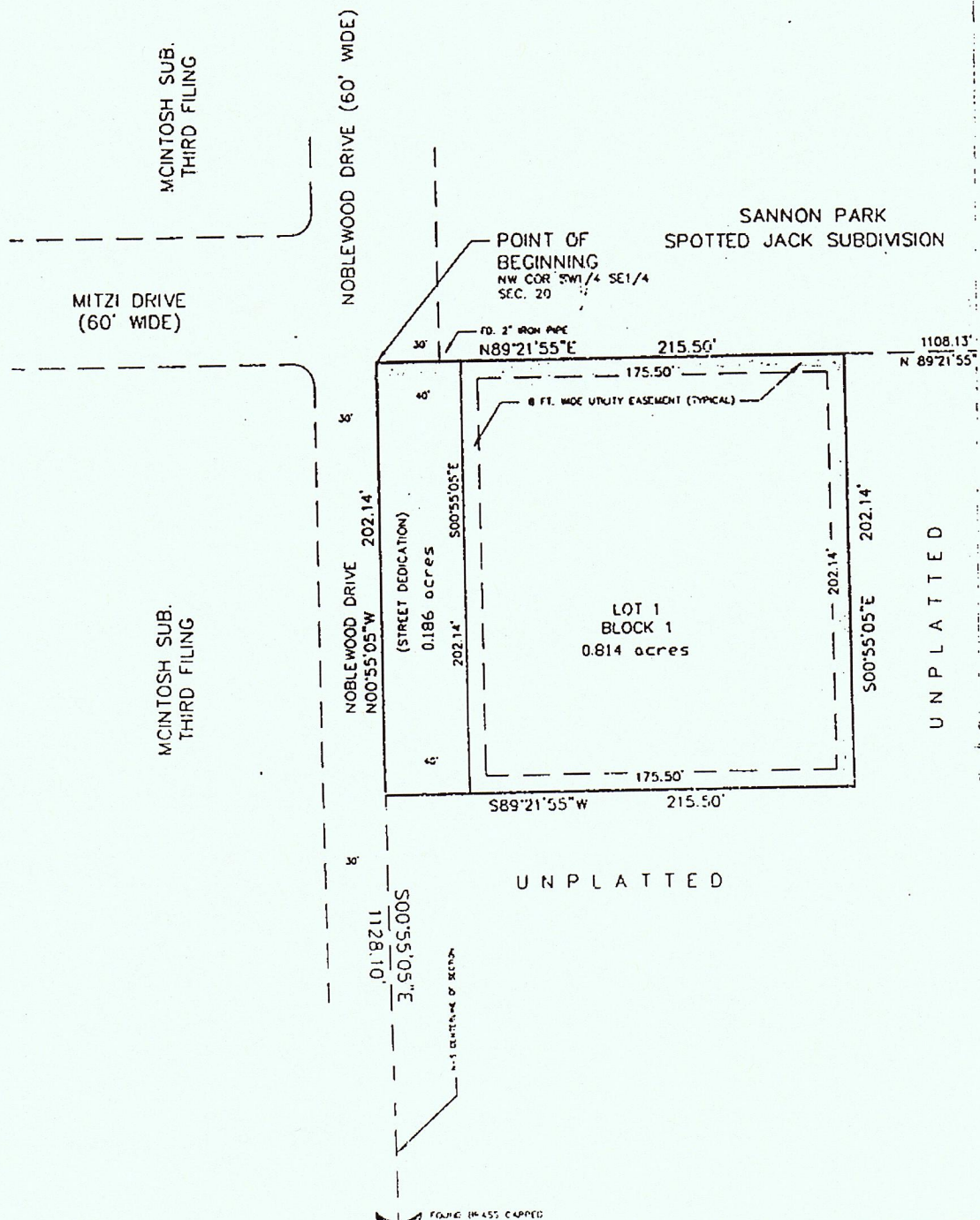


Exhibit C

PETITION TO ESTABLISH A RURAL SPECIAL IMPROVEMENT DISTRICT (RSID)

SECTION C ESTIMATED ANNUAL MAINTENANCE COST

FALL MAINTENANCE:

ACTIVITY/IMPROVEMENT	ESTIMATED COST
	\$
	\$

WINTER MAINTENANCE:

ACTIVITY/IMPROVEMENT	ESTIMATED COST
Snow plowing 2 hours @ \$75.00/hour	\$ 150.00
	\$

SPRING MAINTENANCE:

ACTIVITY/IMPROVEMENT	ESTIMATED COST
	\$
	\$

SUMMER MAINTENANCE:

ACTIVITY/IMPROVEMENT	ESTIMATED COST
	\$
	\$

TOTAL ESTIMATED ANNUAL MAINTENANCE COST: \$ 150.00

CHOOSE A METHOD OF ASSESSMENT:

PAXXXPROCEDURASID